



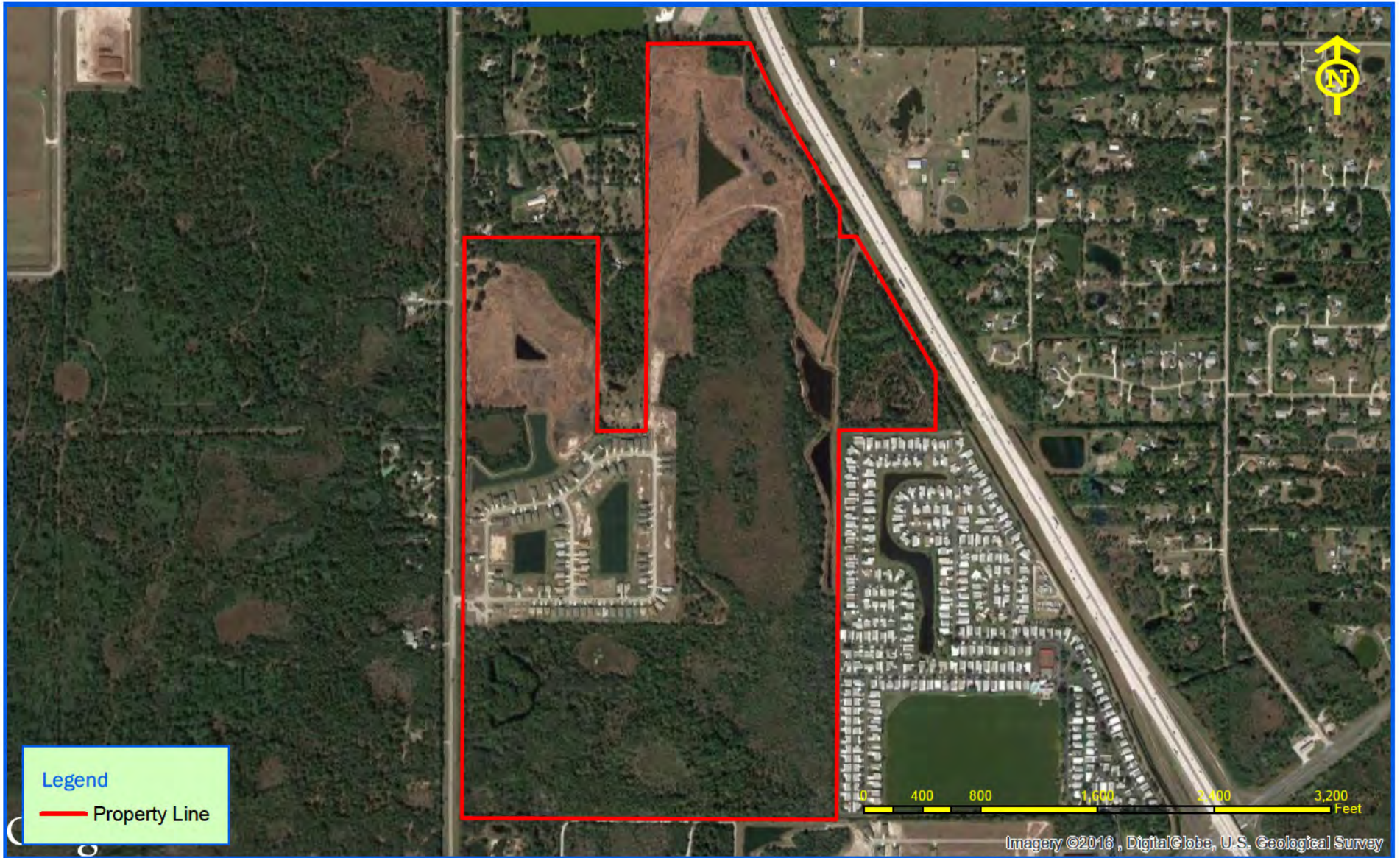
Map Properties  
 Imagery Type: Street Map  
 Imagery Date: 2015  
 Source: ESRI  
 Resolution: N/A  
 Datums  
 Horizontal Datum: NAD 83 FIPS 901  
 Vertical Datum: NAVD 88  
 Units: US Survey Feet

Fieldwork By: ERGIS  
 Date: August 2016  
 Maps By: ERGIS  
 Date: October 30, 2015  
 Revised:  
 Revised:  
 Special Notes:

## Adamson Creek Subdivision Cocoa, Florida Location Map Figure No.2.0

**ergis**  
 ENVIRONMENTAL AND GIS

Philip Hanley  
 Certified Geographic Information Science Professional  
 GISP Certification Number: 62189  
 Email: philh@ergis.us  
 Voice: 877.445.6699



**Map Properties**  
 Imagery Type: Color 3 Band  
 Imagery Date: November, 2014  
 Source: Google  
 Resolution: 1 Meter  
 Datums  
 Horizontal Datum: NAD 83 FIPS 901  
 Vertical Datum: NAVD 88  
 Units: US Survey Feet

Fieldwork By: ERGIS  
 Date: August 2016  
 Maps By: ERGIS  
 Date: October 30, 2016  
 Revised:  
 Revised:  
 Special Notes:

**Adamson Creek Subdivision**  
**Cocoa, Florida**  
**Site Map**  
**Figure No.3.0**

  
 ENVIRONMENTAL AND GIS  
 Phillip Hanley  
 Certified Geographic Information Science Professional  
 GISP Certification Number: 62189  
 Email: philh@ergis.us  
 Voice: 877.445.6699





<b>FI-1</b> <small>DATE: 03/22/18          DRAWN BY: [Name]          PROJECT: [Name]</small>	<b>SCAN ADAMSON LLC</b> HORSHAM, PA	<b>WETLAND FILL IMPACT MAP</b> FIGURE NO. B.3	<b>Adamson Creek</b> Subdivision Osceola, Florida	 <b>Ergis</b> <small>DATA ENTRY          2018 L.L.P.          10000 W. UNIVERSITY BLVD.          SUITE 200          AUSTIN, TEXAS 78758</small>
---	--	--	---	---

LEDGEND					
SYMBOL	DESCRIPTION	ACRES	SYMBOL	DESCRIPTION	ACRES
[Red outline]	TOTAL PROPERTY AREA	271.00			
[White fill]	UPLANDS	145.23			
[Green fill]	ISOLATED UPLANDS	2.08			
[Blue fill]	JURISDICTIONAL WETLANDS 2018	124.02			
[Light Blue fill]	NON-JURISDICTIONAL WETLANDS 2018	0.00			
[Pink hatched]	WETLANDS FILL IMPACTS	38.26			
[Purple dotted]	UPLAND BUFFER/WETLAND PRESERVATION ZONE	91.25			